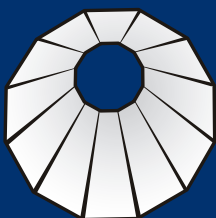


**SERVING THE  
INFRASTRUCTURE  
INDUSTRY ACROSS  
THE GLOBE**



**PERFECT POLE SDN BHD**

922538-A

# BRINGING YOU A GLOBAL EXPERIENCE & EXPERTISE



**We have** earned an international reputation for itself by ensuring long term product reliability, adopting stringent manufacturing practices as per ISO 9001 quality standards and moved forward in catering to the present and future needs of a vast range of medium to heavy fabricated structures, including the competitively priced lighting poles and masts.



**With a view** to globalize our activities and embrace the business challenges that lie ahead in the fast growing infrastructure market in the Asia Pacific region, PERFECT POLE has for the first time set foot in Malaysia, the land known for its culture and hospitality, to manufacture and supply lighting columns as per specific customer requirements on par with international standards.



**By using** raw materials sourced from internationally reputed steel mills, supported by a dedicated workforce committed towards the varied needs of the end customer.



**We are driven** by a group of committed, dynamic and talented entrepreneurs supported by technical experts who always welcome challenging opportunities to continuously with innovative ideas on the edge of their inherent capabilities towards absolute customer delight.



**We are well equipped** with the requisite infrastructure necessary for manufacture of lighting columns which includes a range of heavy duty hydraulic shearing machines, press brakes coupled with automatic welding machines and versatile material handling facilities and have a very effective tie-up for economic outsourcing of other related manufacturing, finishing, packing and testing practices, including outbound logistics.



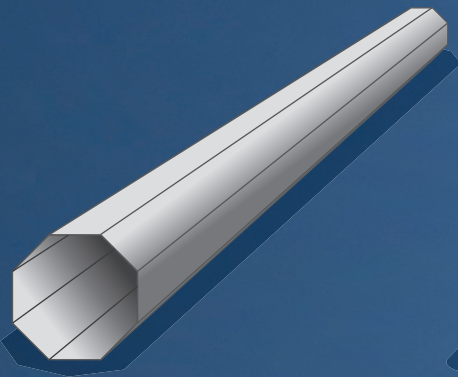
**Our Personnel** have worldwide experience and are experts in the industry for more than 25 years.



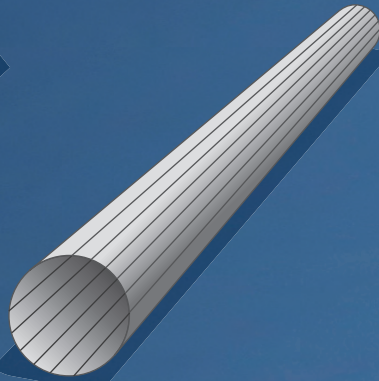
ISO 9001-2008



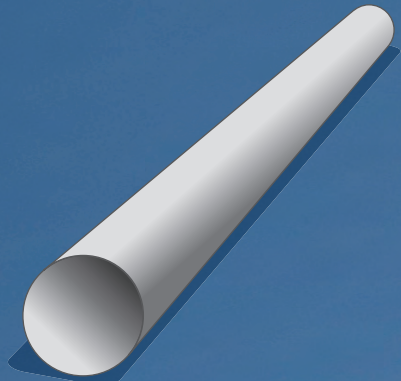
# STANDARD PRODUCT SPECIFICATIONS



Octagonal Pole -Tapered



Polygonal Pole -Tapered



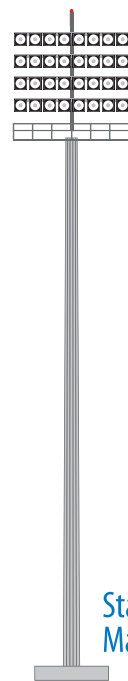
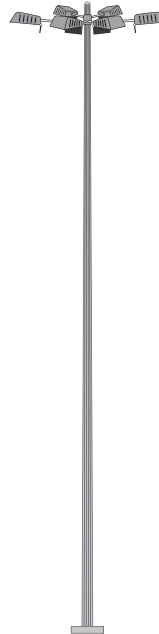
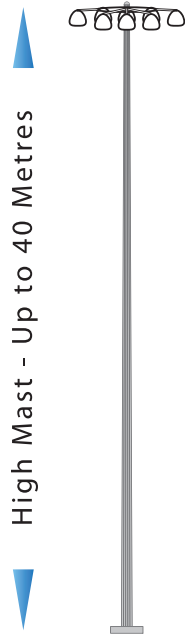
Rounded Pole -Tapered

## PRODUCT RANGE

### High Mast

#### APPLICATIONS:

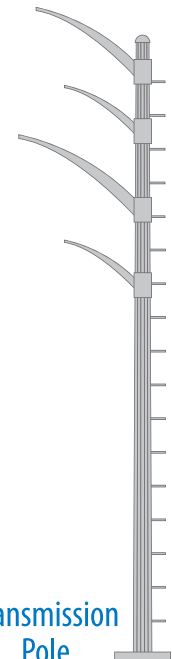
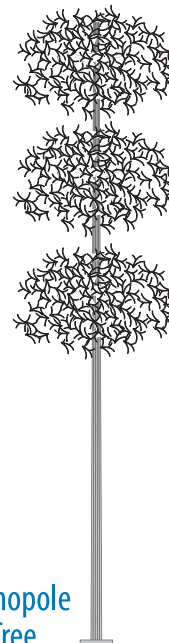
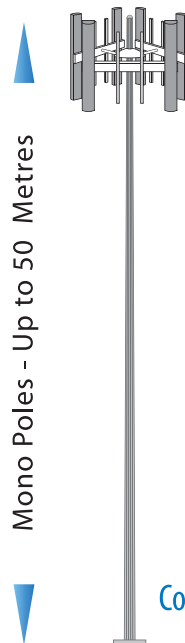
- General Area Lighting
- Yard Lighting
- Track Terminal
- Airport
- Plaza
- Highways etc.



### Mono Poles

#### APPLICATIONS:

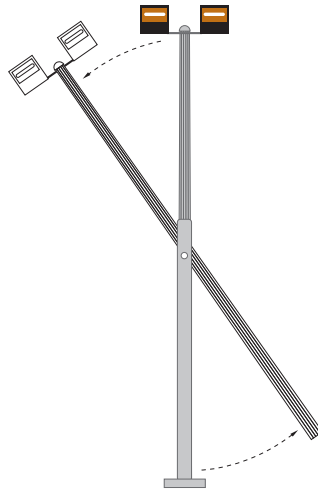
- Power Grid Construction
- Communication Systems
- Lightweight
- Small Space Required



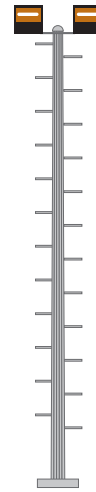
## Columns

### APPLICATIONS:

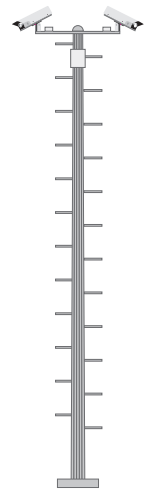
- Outdoor Sports Facilities:
  - Stadiums
  - Courts
- Major Road Intersections
- Airports
- Race Tracks



Mid-Hinged Column



Flood Lights with Climbing Rung

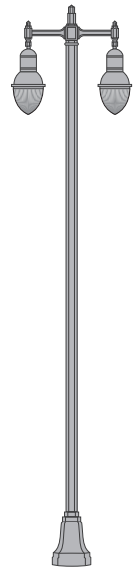
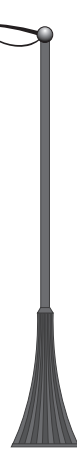
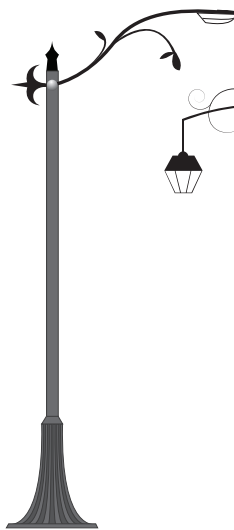


CCTV

## Decorative Street Lights

### APPLICATIONS:

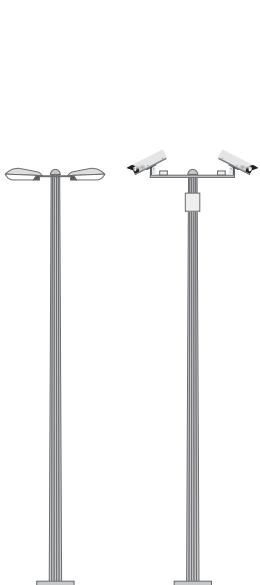
- Prestigious Venues & Roads
- Streets
- Tourist Hot Spots
- Shopping Mall areas
- Housing Areas
- Parks



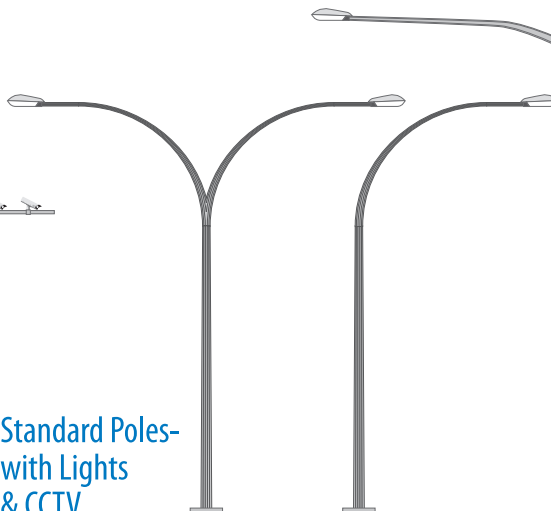
## Innovative Highway Lighting & CCTV Poles

### APPLICATIONS:

- Main Roads
- Service Roads
- Octagonal / Tapered Round Poles
- Custom design and specs as per customer requirements available



Standard Poles-  
with Lights  
& CCTV

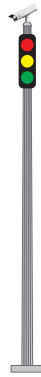


Extra Long Arm  
for Highways

## Innovative Traffic Poles

### APPLICATIONS:

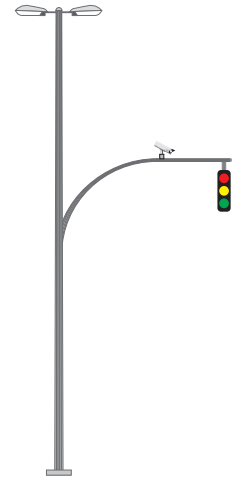
- Streets
  - Major Road Interchanges
  - Train Crossings
  - Junctions
  - Directional Aid
  - Illuminated Traffic Information
- 
- Wind Speed Tolerance: Up to 300km/hr
  - Unique Design
  - Uniform & Easy Installation
  - CCTV Fittings Option



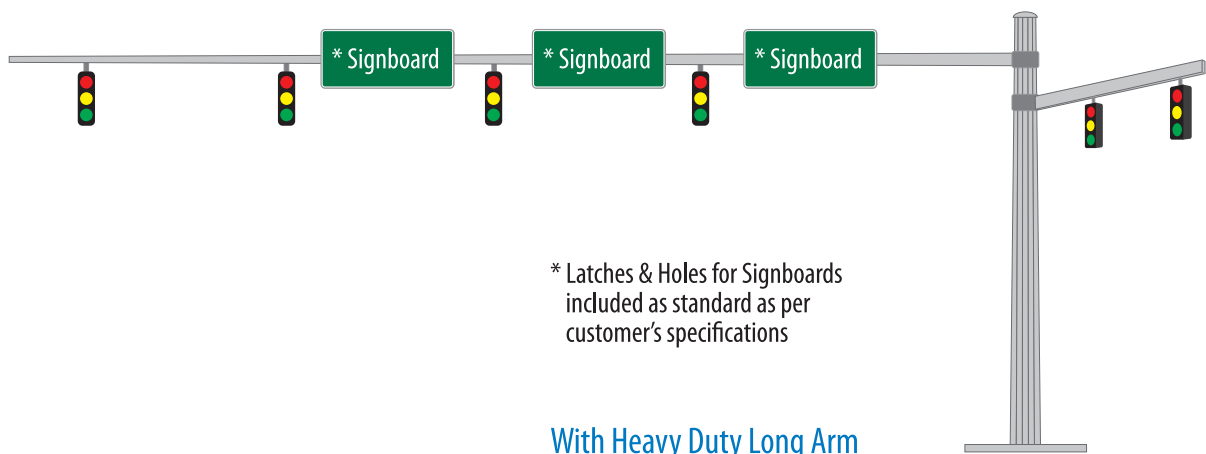
Standard Traffic Pole



Overhead Mast



Joint-Mast and Arm



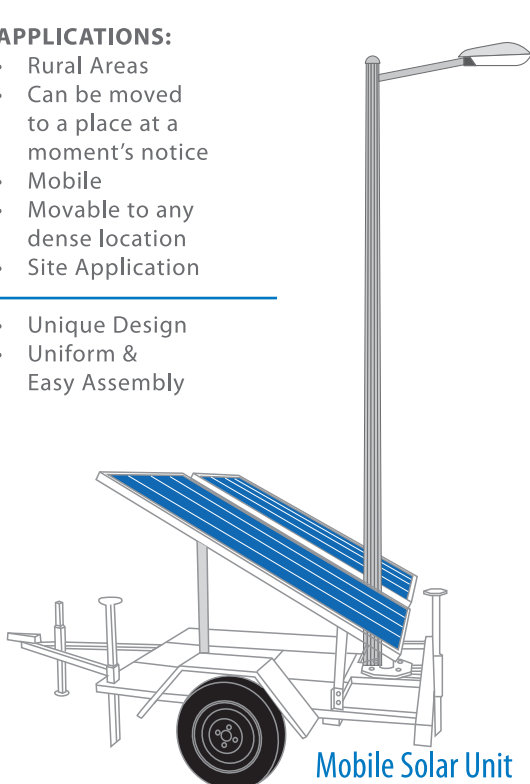
\* Latches & Holes for Signboards included as standard as per customer's specifications

With Heavy Duty Long Arm

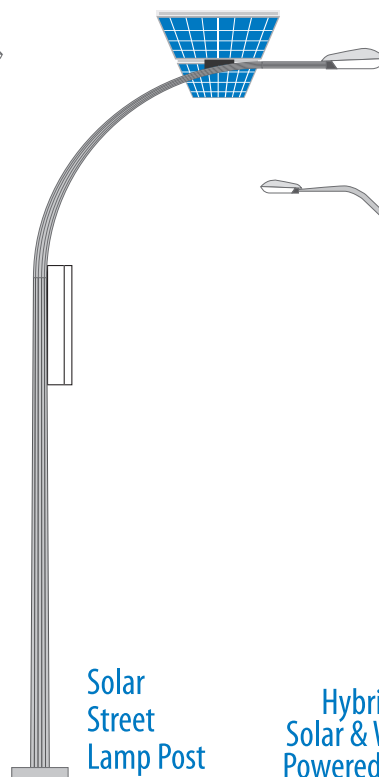
## Solar Pole & Mobile Solar Pole

### APPLICATIONS:

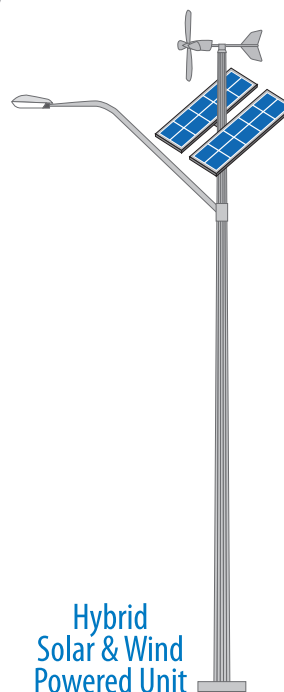
- Rural Areas
  - Can be moved to a place at a moment's notice
  - Mobile
  - Movable to any dense location
  - Site Application
- 
- Unique Design
  - Uniform & Easy Assembly



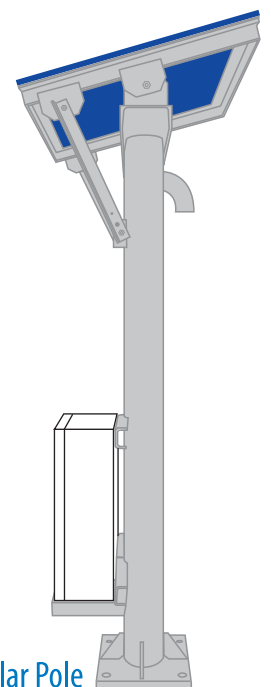
Mobile Solar Unit



Solar Street Lamp Post



Hybrid Solar & Wind Powered Unit



Solar Pole

# MANUFACTURING ALL KINDS OF LIGHTING POLES

## DECORATIVE STREET LIGHTS



## STREET LIGHTS



## TRAFFIC POLES



## HIGH MAST

## MOBILE SOLAR



## SOLAR POLE



## TRANSMISSION POLES



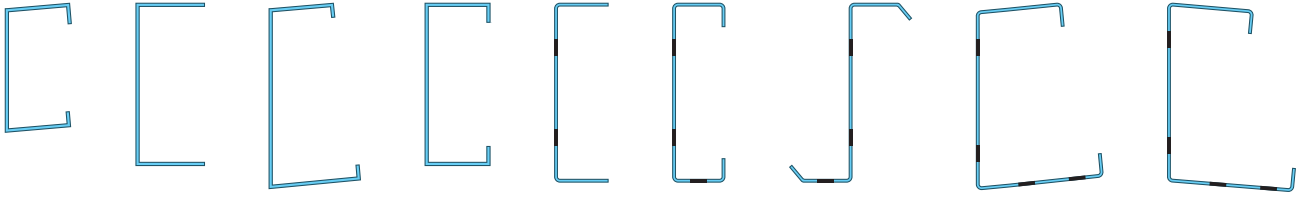
## MONO POLES



## Also can be undertaken:

Fabrication and Pressed Components according to the customer's specifications and drawings.

### Pressed Components



### Metal Fabrication

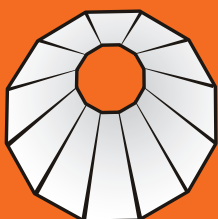


# TECHNICAL SPECIFICATIONS

1. The design of masts and lighting columns are dynamically approved and verified by using (Finite Element Analysis ) Designed to withstand wind speed of 35M per second. Topography, ground roughness and statistical factor of 1.0.
2. Masts are compliance to the standard specification for structural supports for highway signs, luminaires and traffic signals of the American Association of State Highway and Transportation Officials. 1994. Lighting columns comply to the British Lighting Columns Specification BS 5649.
3. Materials used for masts, lighting columns and decorative lighting columns are compliance to BS 4360 Grade 50A, BS 4360 Grade 43A and BS 1387 respectively.
4. Longitude of masts and lighting columns are seam welded conform to BS 5135 by automatic continuous Metal Inert Gas (MIG) process.
5. Both masts and lighting columns are anti-corroded by hot dip galvanized, compliance to Galvanizing Standard ISO 1461 : 1999
6. Service door dimension are given as a guide only. The engineer must satisfy himself that dimension given is adequate for the installation of the required control gears.
7. The shaft of 6M and 7M height lighting columns shall be in single section whereas the shaft of 8M to 12M height lighting columns shall be in 2 sections.

## PHYSICAL DIMENSIONS FOR LIGHTING COLUMNS

TYPE	NOMINAL HEIGHT	PLANTING DEPTH P	A/F-A	A/F-B	C	D	E	F x Thk	G x HOLE	J	L
FLANGE MOUNTED	M	M	mm	mm	mm	mm	mm	mm	mm	mm	M
	6		135		305	100	150	300 x 12	220 x 26	ø20 x 450L	4.2
	7		150		305	110	150	300 x 15	220 x 26		4.2
	8		156		450	110	300	300 x 15	220 x 26		6.2
	9		166		450	115	300	300 x 15	220 x 30	ø25 x 570L	7.2
	10		178		450	115	300	335 x 18	260 x 30		8.2
	12		202		450	120	300	400 x 18	300 x 30		10.2
PLANTED	6	1.2		150	305	100	150				4.2
	7	1.2		162	305	110	150				5.2
	8	1.3		172	450	110	300				6.2
	9	1.4		183	450	115	300				7.2
	10	1.5		196	450	115	300				8.2
	12	1.7		223	450	120	300				10.2



## PERFECT POLE SDN BHD

Block C, Lot 2592, Jalan Seruling 59,  
Kawasan 3, Taman Klang Jaya,  
41200 Klang, Selangor Darul Ehsan, Malaysia

Tel: +603-3323 4890, 3323 4743  
Fax: +603-3323 4614

Email: [info@perfectpoles.com](mailto:info@perfectpoles.com)  
Web: [www.perfectpoles.com](http://www.perfectpoles.com)

922538-A